

6578000N

- Alkali-feldspar leucogranite and pegmatite
- K-feldspar–phyric granodiorite
- Feldspathic meta-arenite
- Interbedded semipelitic and pelitic gneiss
- Calcsilicate gneiss and marble
- Interbedded psammitic and calcsilicate gneiss
- Psammitic gneiss
- Tonalitic to granitic orthogneiss
- Monzogranite, strongly foliated to gneissic

Snyder Lake till geochemistry (aqua regia partial digestion) U (ppm) in <63 μm fraction

- 1.3–1.5
- 1.51–1.8
- 1.81–2.0
- 2.01–2.3
- 2.31–2.7
- 2.71–4.2
- 4.21–6.4
- 6.41–32.8

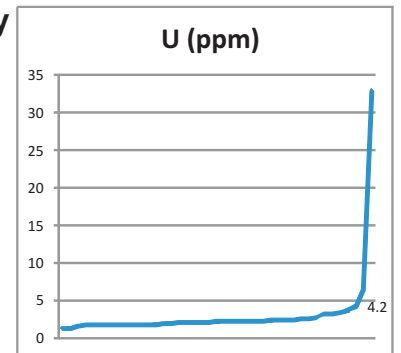


Figure 44: Snyder Lake till geochemistry: partial digestion of <63 μm fraction, U.